

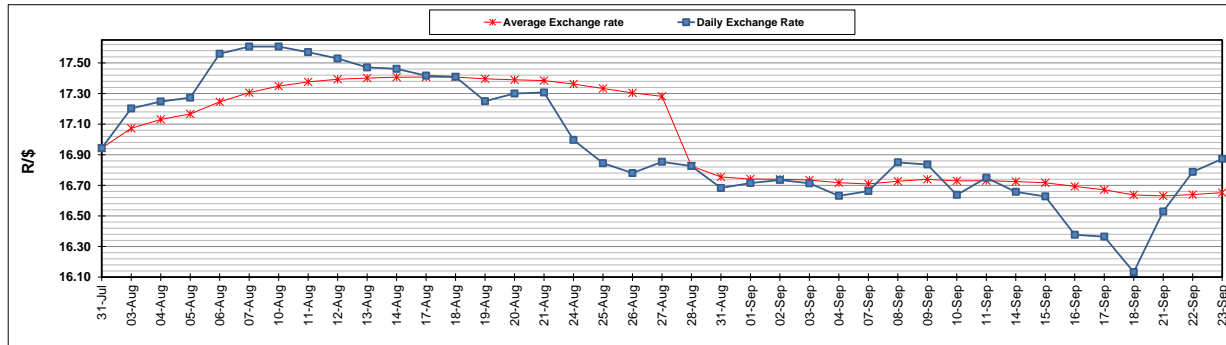
	PETROL 95 ULP	PETROL 93 ULP & LRP	DIESEL 0.05%	DIESEL 0.005%	ILL. PAR.
GAUTENG PUMP PRICE (SA c/l) AS FROM 02/09/2020	1,518.000	1,489.000	-	-	-
WHOLESALE PRICE (SA c/l) AS FROM 02/09/2020	-	-	1,327.560	1,331.960	716.828
SINGLE NATIONAL MAXIMUM RETAIL PRICE	-	-	-	-	899.000
BASIC FUEL PRICE - 23/09/2020 (SA c/l)	538.183	526.823	483.269	485.088	444.866
PRESS RELEASE CONTRIBUTION TO BFP 02/09/2020 - 23/09/2020 (SA c/l)	565.470	546.470	576.630	581.030	512.128
UNIT OVER/(UNDER) RECOVERY - 23/09/2020 (SA c/l)	27.287	19.647	93.361	95.942	67.262
AVERAGE BASIC FUEL PRICE 28/08/2020 - 23/09/2020	530.899	520.584	489.293	491.336	435.033
AVERAGE UNIT OVER/(UNDER) RECOVERY 28/08/2020 - 23/09/2020	35.250	26.565	90.653	93.010	81.200

ANALYSIS MOVEMENT OF AVERAGE OVER/(UNDER) RECOVERY

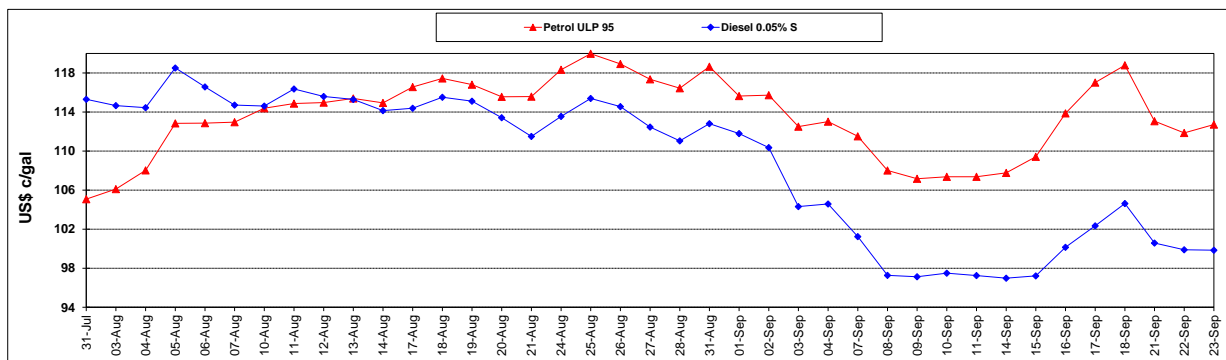
	PETROL 95	PETROL 93	DIESEL 0.05%	DIESEL 0.005%	ILL. PAR.
- MOVEMENT IN INTERNATIONAL PRODUCT PRICES	15.183	6.888	72.159	74.439	64.757
- MOVEMENT IN EXCHANGE RATE	20.067	19.677	18.494	18.571	16.443
AVERAGE UNIT OVER/(UNDER) RECOVERY 28/08/2020 - 23/09/2020	35.250	26.565	90.653	93.010	81.200

R/\$ EXCHANGE RATE - (R/\$16.8728 - 23/09/2020)

EXCHANGE RATE USED IN BASIC FUEL PRICE



INTERNATIONAL PRODUCT PRICES OF BASKET USED IN BASIC FUEL PRICE



BASIC FUEL PRICE IN SA CENTS PER LITRE

